

STONY CREEK METROPARK WINTER ACTIVITIES

4300 Main Park Road, Shelby Township, MI 48316 | Park Office: (586) 781-4242 | Ski Center: (586) 781-9166 | METROPARKS.COM



- CROSS-COUNTRY SKIING
- FAT TIRE MOUNTAIN BIKING
- FIRST AID
- HIKING
- ICE FISHING
- ICE SKATING
- MOUNTAIN HANDYCYCLING
- PLAYGROUND
- REPAIR STATION
- RESTROOMS CLOSED IN WINTER
- RESTROOMS OPEN IN WINTER
- SKI RENTAL
- SLEDDING
- SNOWBOARDING
- TOLL BOOTH
- TRAILHEAD
- INTERSECTIONS
- PICNIC SHELTERS

SKI TRAILS

Ski trails use Nordic Difficulty Rating System

- EASY
- MODERATE
- DIFFICULT

FAT TIRE BIKING TRAILS

One directional trails (Not groomed)

- BACK NINE
- BEACH
- BEE LINE
- GROM
- PINES
- RIDGELINE (Two directional trail)
- ROLLER COASTER
- SHORTCUT
- SNAKE
- TROLLEY TRAILS

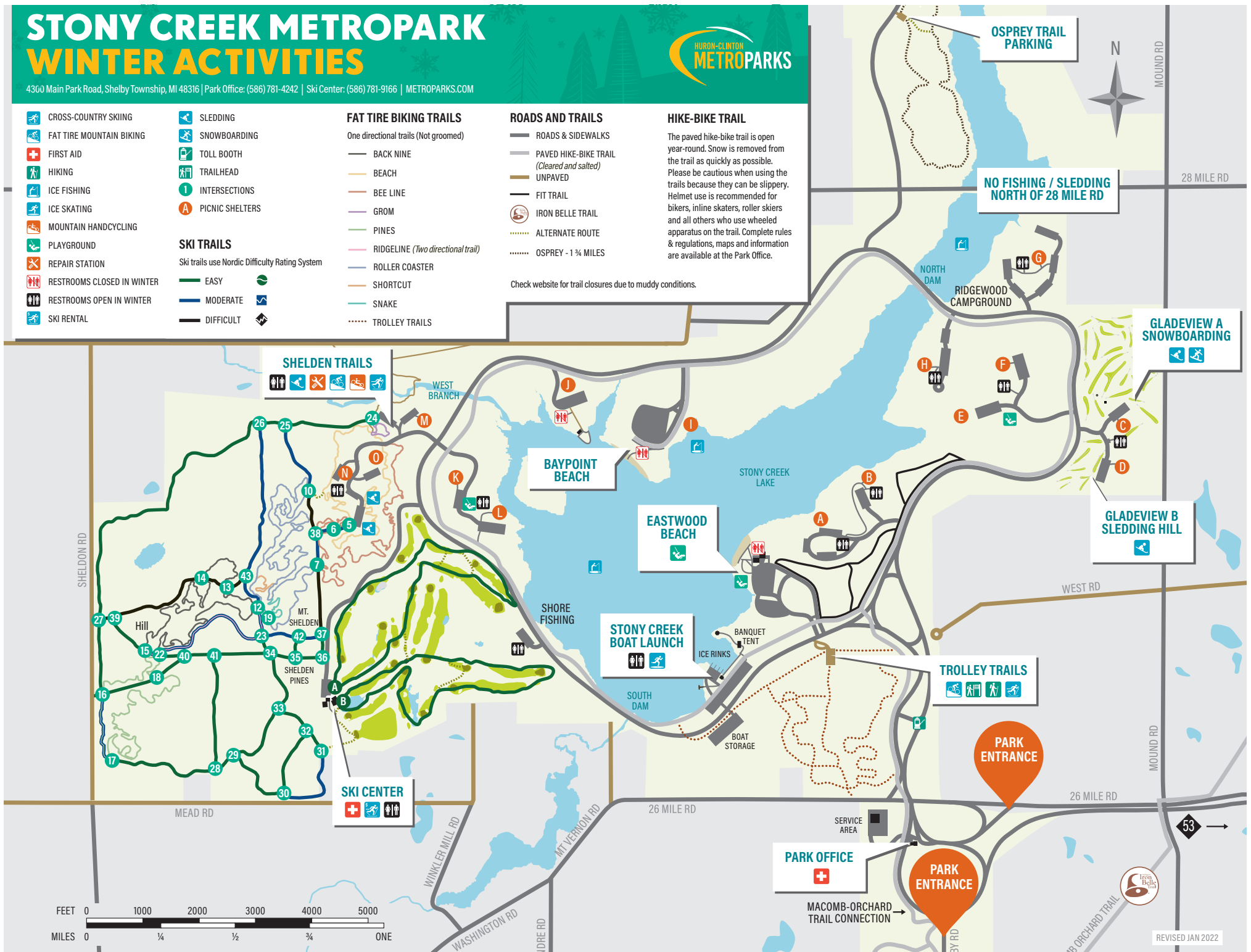
ROADS AND TRAILS

- ROADS & SIDEWALKS
- PAVED HIKE-BIKE TRAIL (Cleared and salted)
- UNPAVED
- FIT TRAIL
- IRON BELLE TRAIL
- ALTERNATE ROUTE
- OSPREY - 1 1/4 MILES

Check website for trail closures due to muddy conditions.

HIKE-BIKE TRAIL

The paved hike-bike trail is open year-round. Snow is removed from the trail as quickly as possible. Please be cautious when using the trails because they can be slippery. Helmet use is recommended for bikers, inline skaters, roller skiers and all others who use wheeled apparatus on the trail. Complete rules & regulations, maps and information are available at the Park Office.



OSPREY TRAIL PARKING

NO FISHING / SLEDDING NORTH OF 28 MILE RD

GLADEVIEW A SNOWBOARDING

GLADEVIEW B SLEDDING HILL

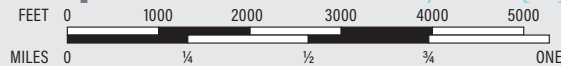
TROLLEY TRAILS

PARK ENTRANCE

PARK OFFICE

PARK ENTRANCE

MACOMB-ORCHARD TRAIL CONNECTION



REVISED JAN 2022