

ACORN NATURE TRAIL HUDSON MILLS METROPARK



METROPARKS.COM

ACORN NATURE TRAIL GUIDE STOPS

1. Cattails
2. Water on the Move
3. Understory Ashes
4. Raccoon Tree
5. River View
6. Vernal Pool
7. Deer Enclosure
8. Spring Flood, Summer Drought
9. Shelter Building
10. Don't worry, That Tree's All Right

HIKE SUGGESTIONS

1. Listen for animals like the Chick-a-dee (chick a dee-dee-dee), Nuthatch (yank-yank), Tufted Titmouse (peter-peter-peter), and Squirrel chatter.
2. Look for tracks, scat, tree holes, nests, tunnels, and other signs of wildlife.





Cattails

1. CATTAILS

Cattails grow in wetlands and help filter the water. They are also a home for animals such as Red-winged Blackbirds and muskrats. Thought of as a survivor's plant, different parts of the plant can be eaten through the seasons.



River

2. WATER ON THE MOVE

Please review the interpretive sign for more information on the movement of water through the land.



Emerald Ash Borer

3. UNDERSTORY ASHES

Once used to make wooden bats, large ash trees are getting hard to find. Around the forest, you might see many small trees, or understory, some of these are ash trees. In 2002 the Emerald Ash Borer, native to Asia, was found in MI. They feed on the tree's inner bark, cutting off supply lines from roots to leaves.



Raccoon

4. RACCOON TREE

If you are facing trail marker 4, look behind you for a tall dead tree that is missing its top (or crown). It has a large hollow top that you may find a furry head peeking out. This is a perfect raccoon resting tree. It is out of the wind and is warmed by the sun. Can you find it?



Belted Kingfisher

5. RIVER VIEW

Enjoy the Huron River view. Its 130 miles begin in the Huron Swamp (north of Indian Springs Metropark) and drain into Lake Erie. Fish, turtles, snakes, frogs, mink, beaver, birds, and more call it home. Can you hear the rattle of the Kingfisher as it flies along the river looking for fish to eat?



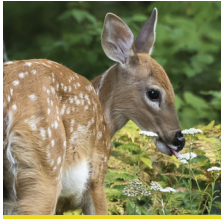
Vernal Pond

6. VERNAL POND

This is an ephemeral wetland characterized by seasonal flooding in a forested setting. They are generally isolated from stream systems and are absent of fish. These wetlands are fed by snowmelt and rainwater, and stay wet until they dry up in mid-summer. They are usually small in size but highly productive. The presence of wood frogs, fingernail clams, and fairy shrimp indicate the wetland is a vernal pond. They are important breeding pools for salamanders too. On a good night, you could see hundreds of migrating salamanders. Begin looking at the Metroparks website for our Hudson Mills Metropark Salamander Migration program in late March or early April.



Red-winged Blackbird



Deer Browsing

7. DEER EXCLOSURE

This is not a cage to keep animals in, it is an enclosure to keep white-tailed deer out. It allows plants to grow and helps to show the potential impact of deer populations in the park. Visit during spring to see if there are differences in the browsed and un-browsed habitats.



Blue Spotted Salamander

8. SPRING FLOOD, SUMMER DROUGHT

Check out the interpretive signage for more information about vernal ponds.



Survival Shelter

9. SHELTER BUILDING

The shelters you see have been built by visitors during one of our interpretive programs or camps. We have programs to teach you how to build a survival shelter from the natural materials around you.



Tamarack

10. DON'T WORRY, THAT TREE'S OK

Check out the interpretive signage for more information about the tamarack.



TRAIL RULES:

1. Walk slowly, quietly, and remain on trails.
2. All collecting is prohibited.
3. Running, jogging, bicycles, pets, motorized vehicles, and horses are not permitted on the nature trails.
4. Picnicking is not allowed within the nature trails area.
5. Please leave all radios, toys, and sports equipment in your car.
6. Follow all park rules and regulations.

Hudson Mills Metropark

8801 N. Territorial Road

Dexter, MI 48130

734.426.8211

METROPARKS.COM



HURON-CLINTON
METROPARKS